

GP Liaison

What do GPLOs do?

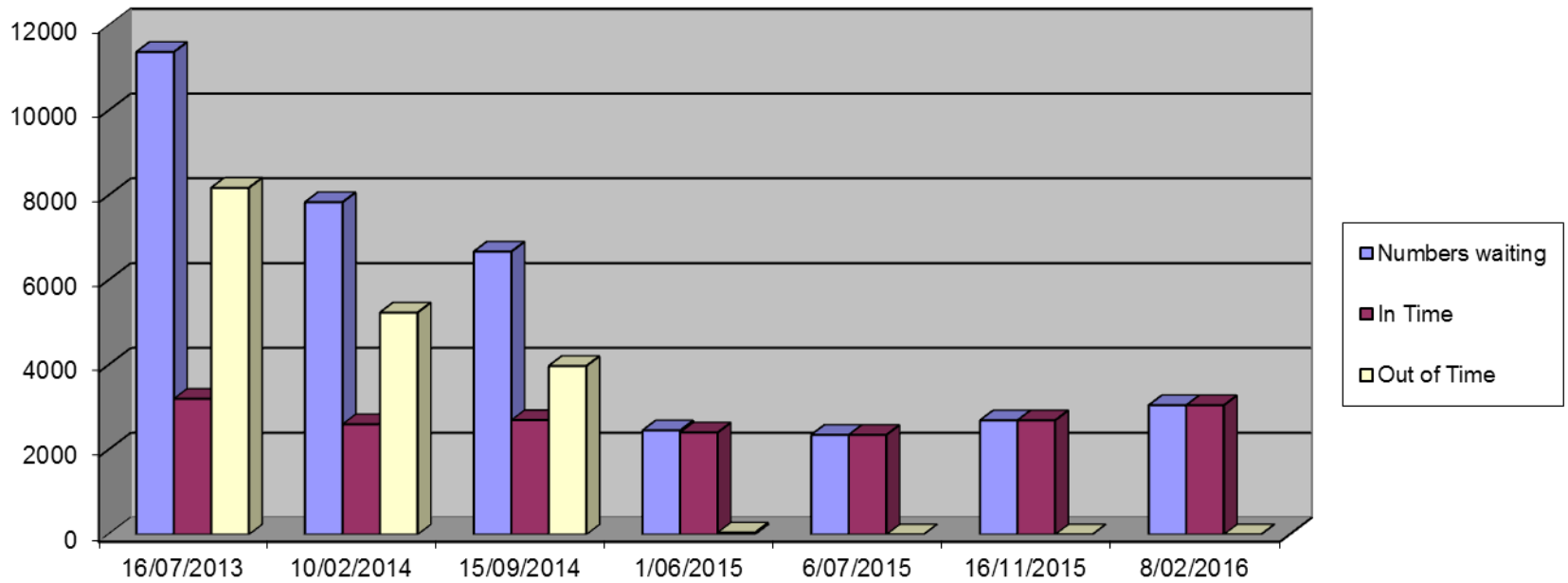
- Enhance appropriate clinical pathways between settings
- Improve clinical handover and discharge from hospital
- Better integration of services
- Identify and address service gaps especially at the interface between primary and specialist outpatient care

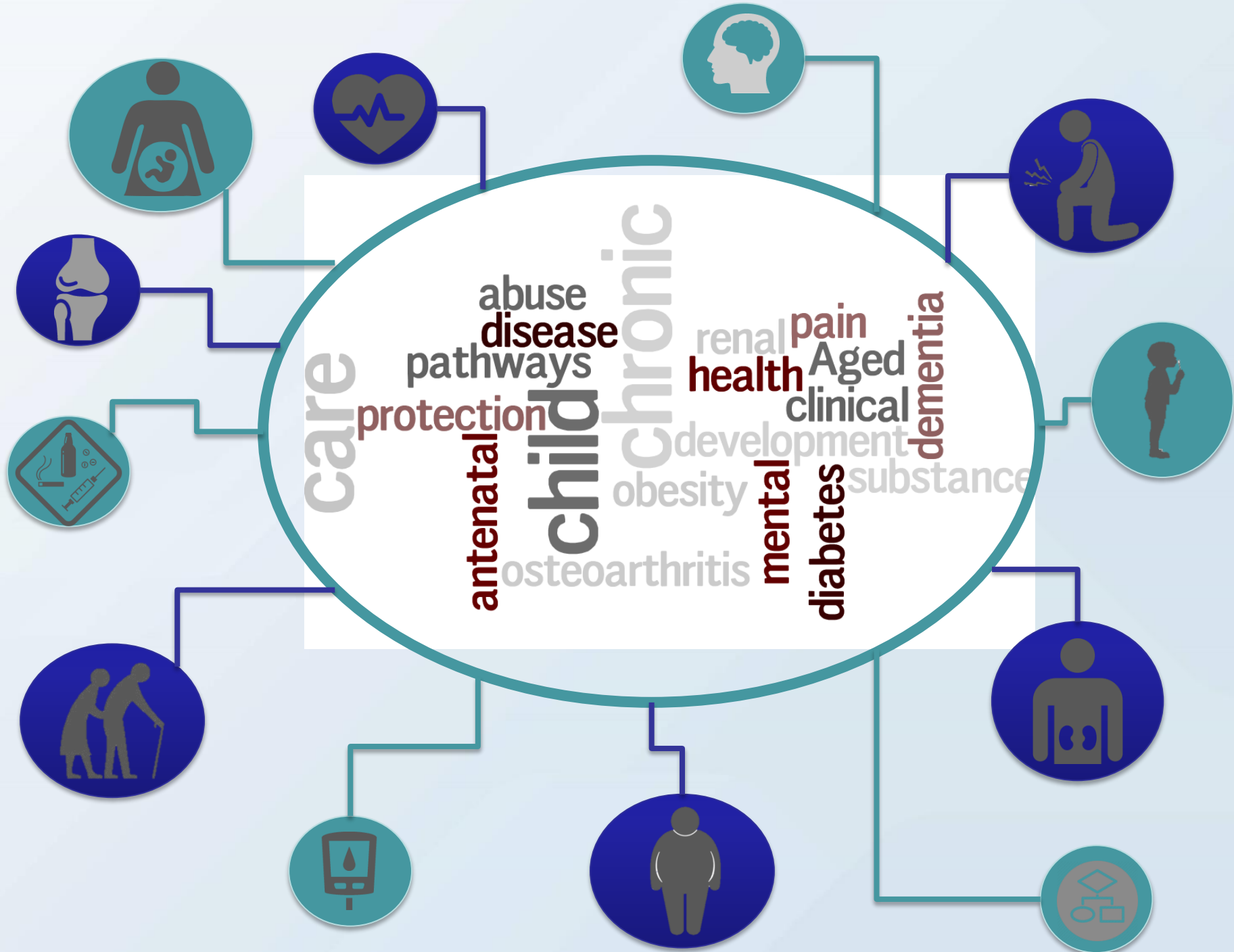
Position Description

The GPLO will be responsible for improving the interface between the hospital (outpatient department) and primary health care by providing input into the planning and development of services at the local level, ensuring care is integrated across the entire patient journey and appreciating the position operates within a broader HHS network of service delivery.



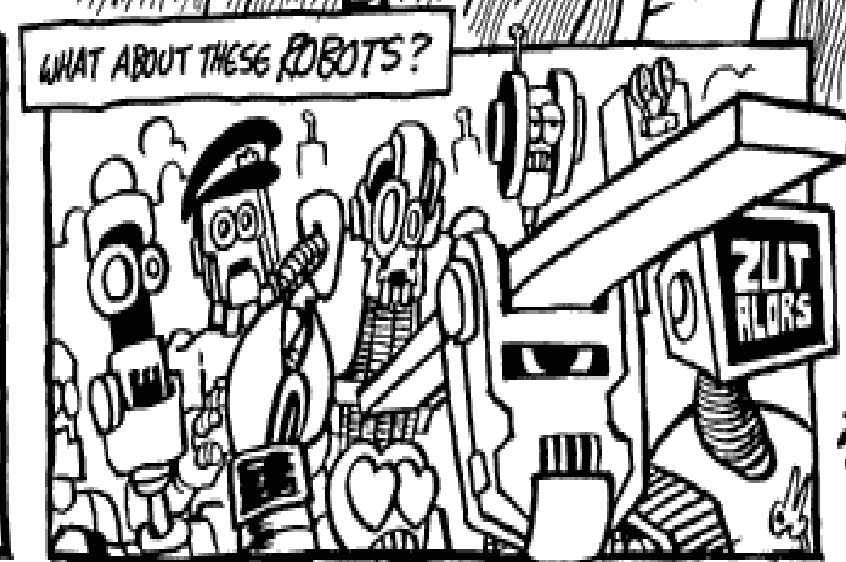
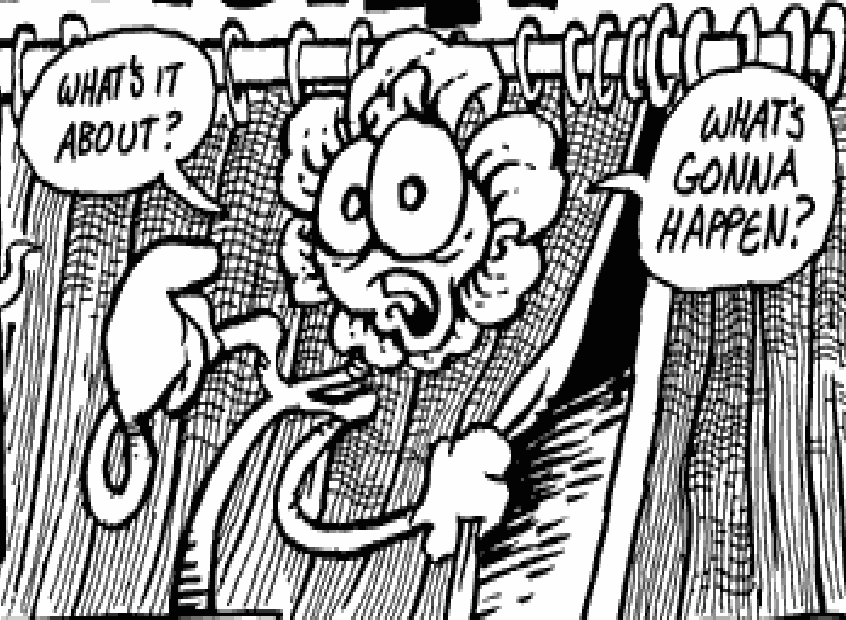
Numbers waiting for specialist OPD appointment Toowoomba Hospital





BOB THE FLOWER: ANGRY in/of The MYSTERY CARTOON

angryflower.com



?????
WHO KNOWS?
?????