

# WE ARE THE WORK FORCE COUNCIL

ENERGISING HEALTH AND COMMUNITY SERVICES SINCE 1992

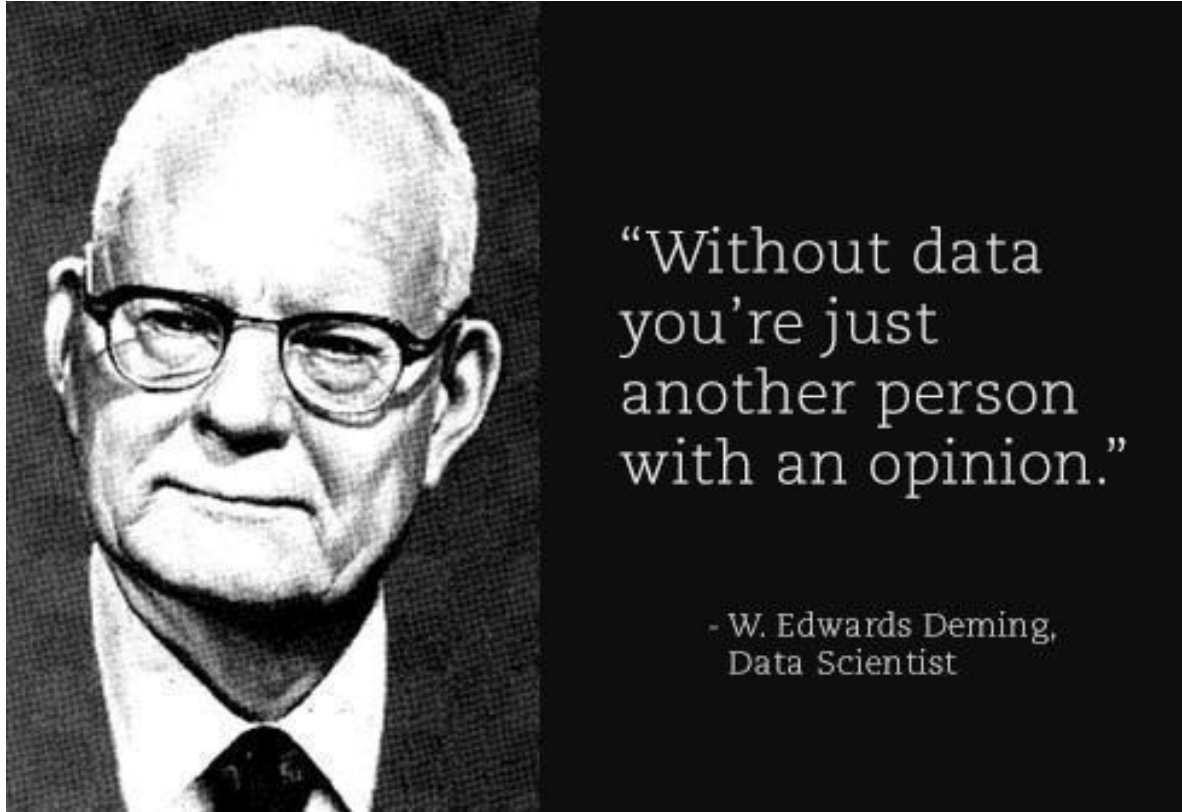
*Working Together*



**Big Data &  
Analytics –  
Integrated Care  
Model**

# About the Workforce Council





# Insights Business

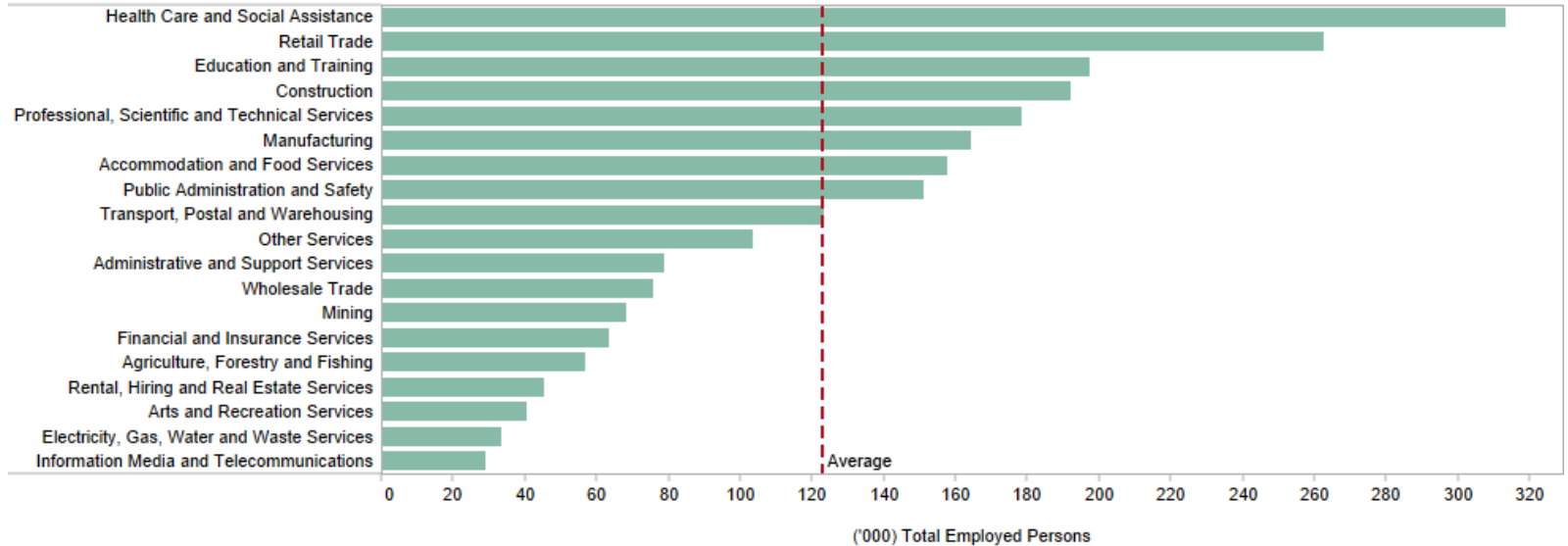
- Value – To turn data into evidence for action
- Goal/objective – To help organisations within health and community services make more informed decisions by empowering professionals to analyse large volumes of data through our products and services such as infographics, data reports and [Tableau](#) interactive data dashboards.

# INDUSTRY DASHBOARD

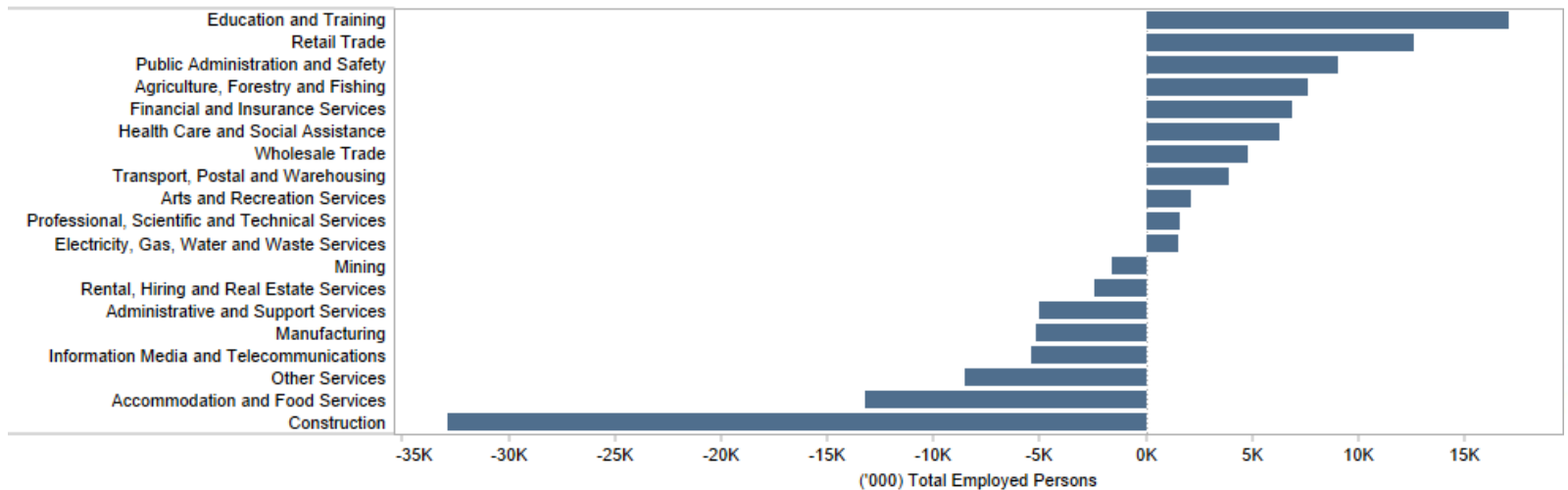
Multiple Values

Industry

TOTAL EMPLOYMENT BY ALL INDUSTRIES IN QLD - AUG QTR 2015 - RANKED

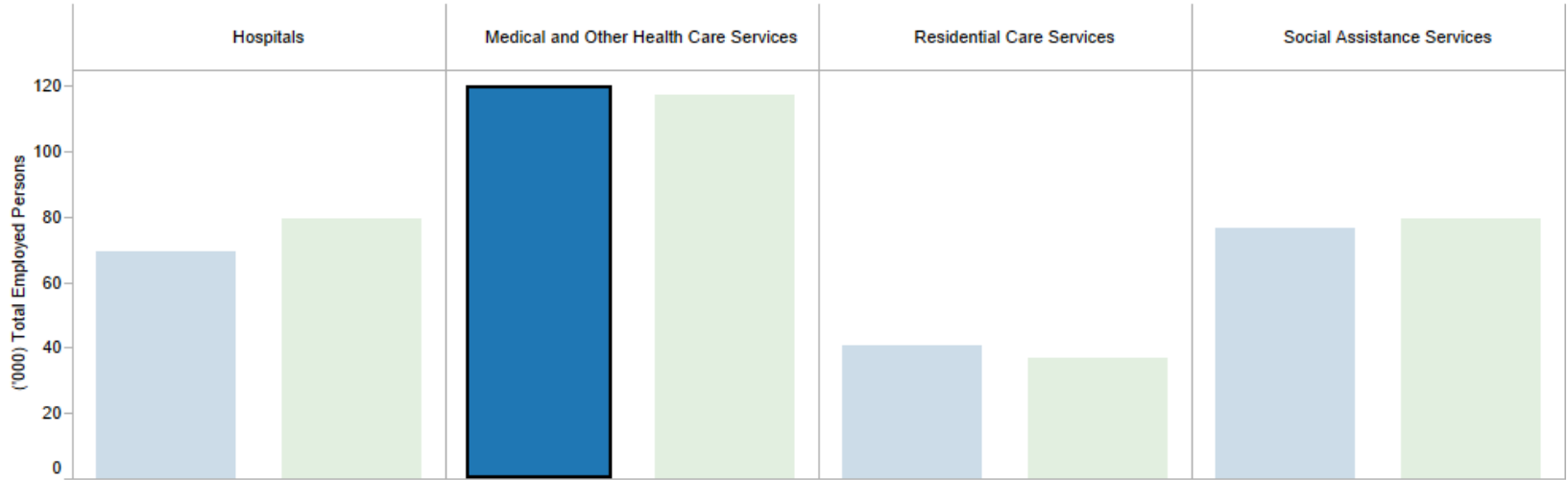


TOTAL EMPLOYMENT BY ALL INDUSTRIES IN QLD - NUMBER CHANGE BETWEEN AUG 2014 QTR & AUG QTR 2015 QTR

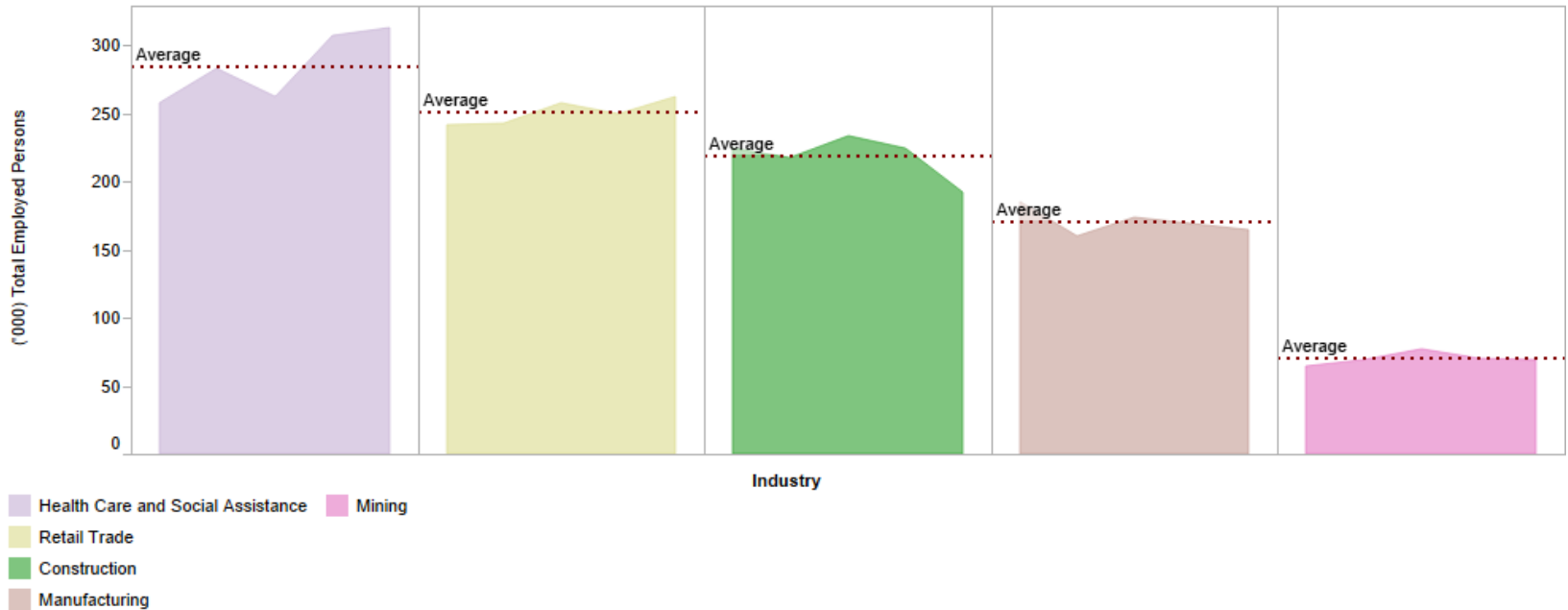


## INDUSTRY DASHBOARD

TOTAL EMPLOYMENT BY H&CS SELECTED SECTORS - AUG QTR 2014 & AUG QTR 2015



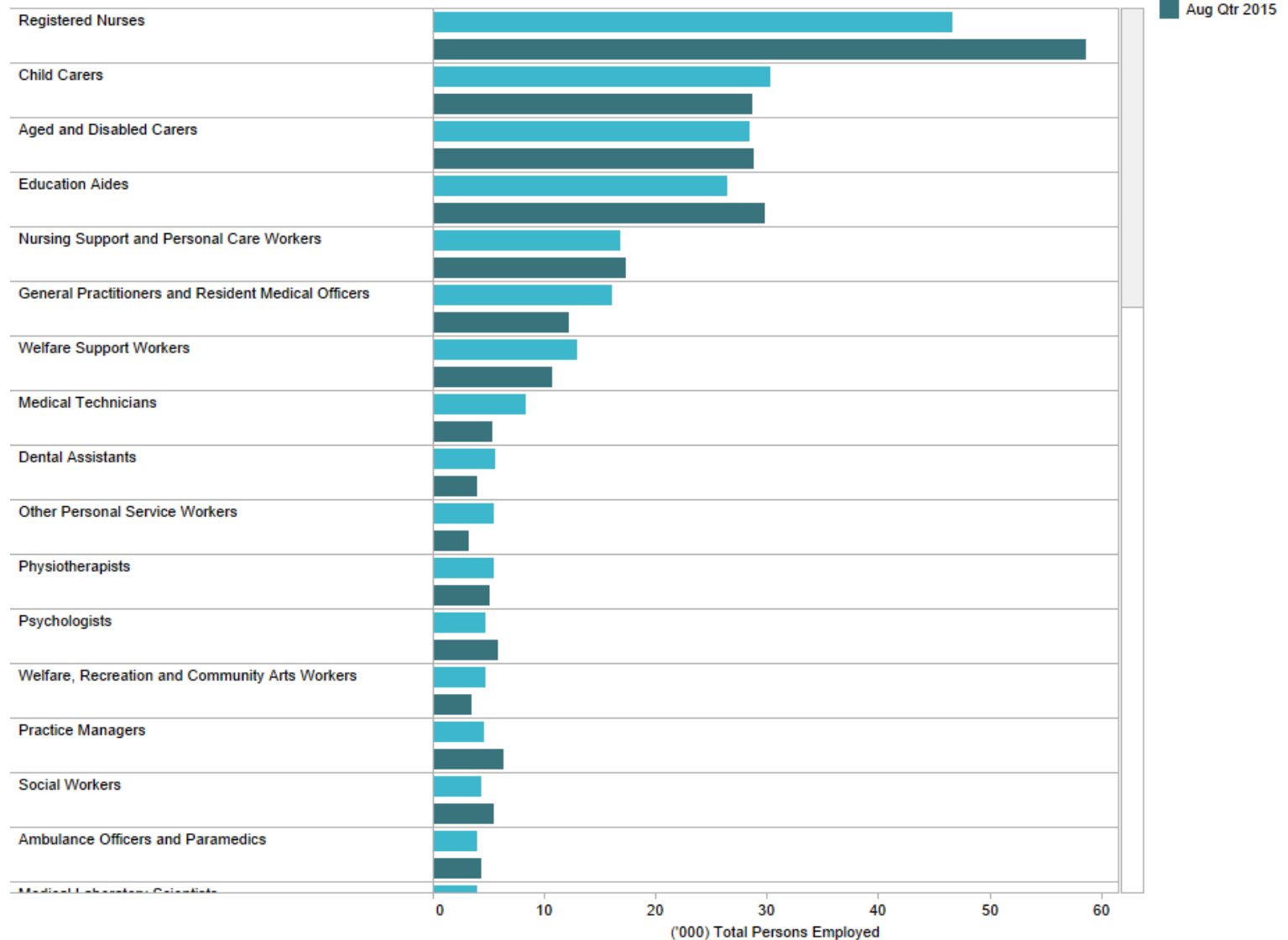
INDUSTRY TOTAL EMPLOYMENT (QLD) - TIME SERIES - AUGUST QUARTER



## OCCUPATION DASHBOARD

Occupations (ANZSCO 4 digit)  
All

HEALTH & COMMUNITY SERVICES OCCUPATIONS BY TOTAL EMPLOYMENT (QLD) - AUGUST QUARTER 2014 & AUGUST QUARTER 2015



## REGIONAL DASHBOARD

HEALTH & COMMUNITY SERVICES TOTAL EMPLOYMENT BY SA4 REGIONS (QLD) - AUGUST QUARTER 2014 & AUGUST QUARTER 2015



Source: ABS Labour Force, Australia, Detailed, Quarterly, August 2015 (Cat. No. 6291.0.55.003)



# Health and Community Services Workforce Insights

6,300 new jobs was created f..

Health and Community Services maintains the largest industry share of total employment in Queensland with 13.4% in August 2015

The Health and Community Services Industry contributed 21.9 billion dollars towards the Queensland economy in 2014-15. This was an increase of 2.2 billion dollars or 10.1% from the previous 12 months. Health and Community Services was ranked second highest industry in terms of Gross Value Added (GVA) in 2014-15.

97 percent of all businesses within health and community services in Queensland are small (non-employing & 1 to 19 employees).

Hospitals is the largest g ro..



# Health and Community Services Workforce Insights

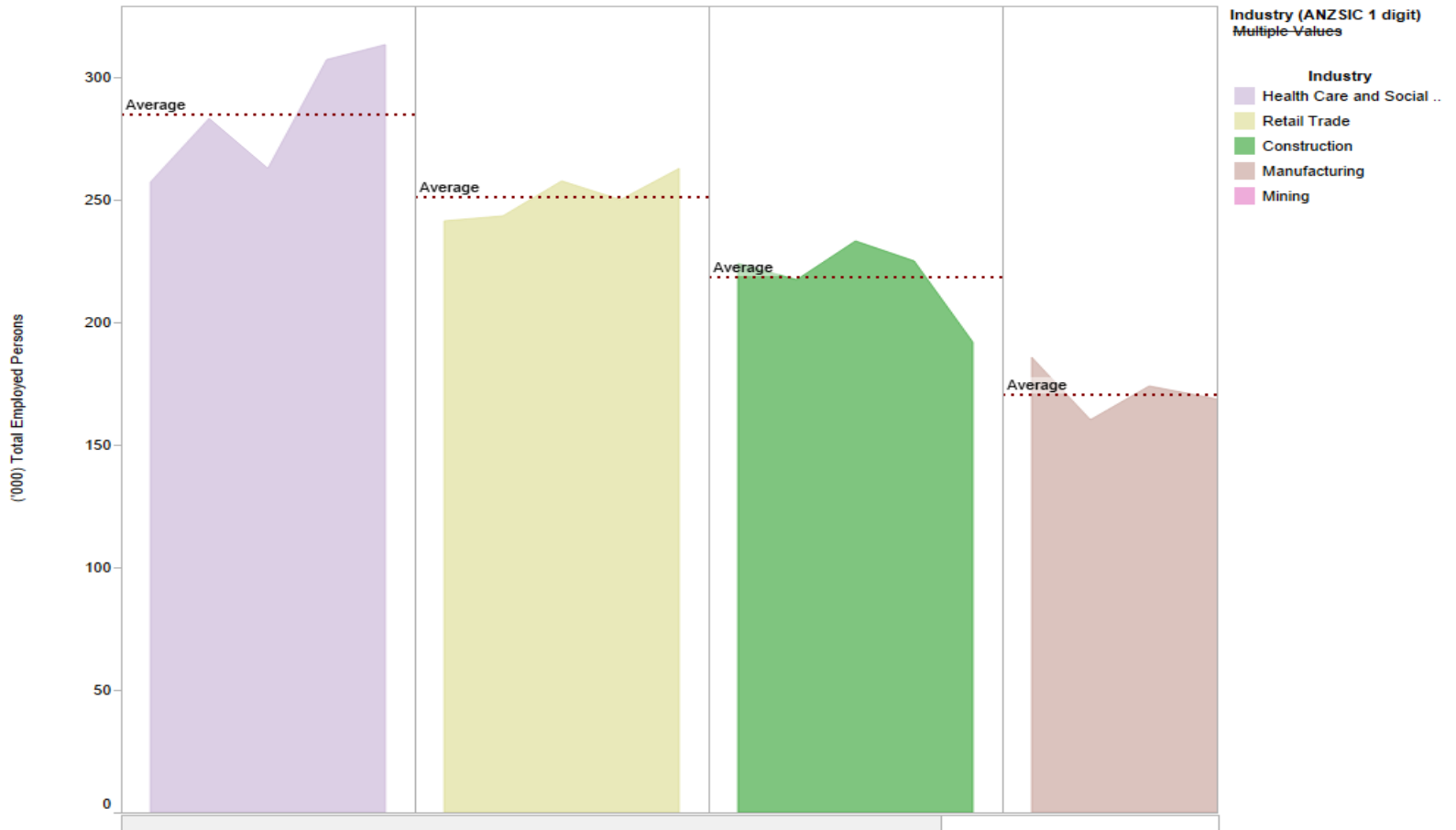
97 per cent of all business...

Hospitals is the largest growing sector within health and community services with over 10,000 new jobs between August 2014 & August 2015. Health (Hospitals & Medical and Other Health Care Services) has the largest workforce compare to Community Services (Residential Care Services & Social Assistance Services) with 196,800 people, an increase of 8,600 new jobs over 12 months.

Health and Community Services workforce has been on the rise over the last three years in Queensland. There has also been a large increase within the Retail sector over the past year. However there has been significant decline in the Construction workforce over the past two years. The mining workforce appears to remain stable. Manufacturing is showing steady decline over the past few years in Queensland.

Registered Nurses is the largest occupation within health and community services comprising 58,600 workers followed by Education Aides (29,800) and Aged and Disabled Carers (28,800).

While there was an increase in...



# Health and Community Services Workforce Insights

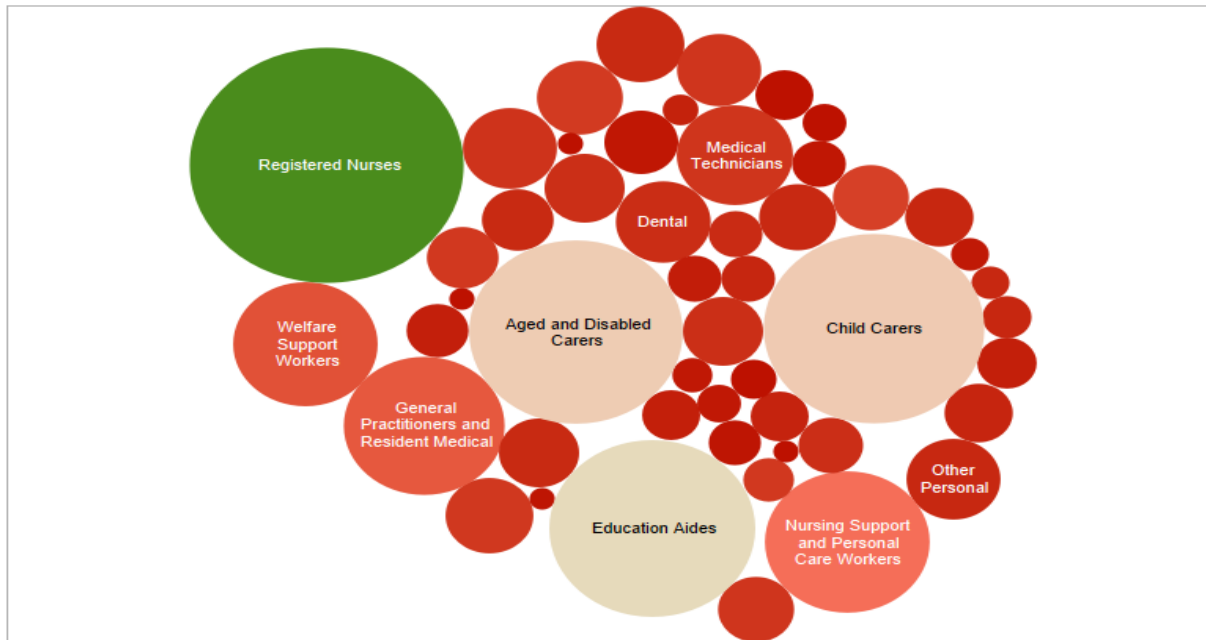
97 per cent of all business...

Health and Community Services workforce has been on the rise over the last three years in Queensland. There has also been a large increase within the Retail sector over the past year. However there has been significant decline in the Construction workforce over the past two years. The mining workforce appears to remain stable. Manufacturing is showing steady decline over the past few years in Queensland.

Registered Nurses is the largest occupation within health and community services comprising 58,600 workers followed by Education Aides (29,800) and Aged and Disabled Carers (28,800).

While there was increases in five of the top ten health and community service occupations between August 2014 and August 2015 in Queensland, there were decreases in General Practitioners and Residential Medical Officers, Welfare Support Workers, Medical Technicians, Dental Assistants and Other Personal Service Workers.

As at August 2015, Townsville...



Aug Qtr 2015 ('000) employ..  
0.40 58.60

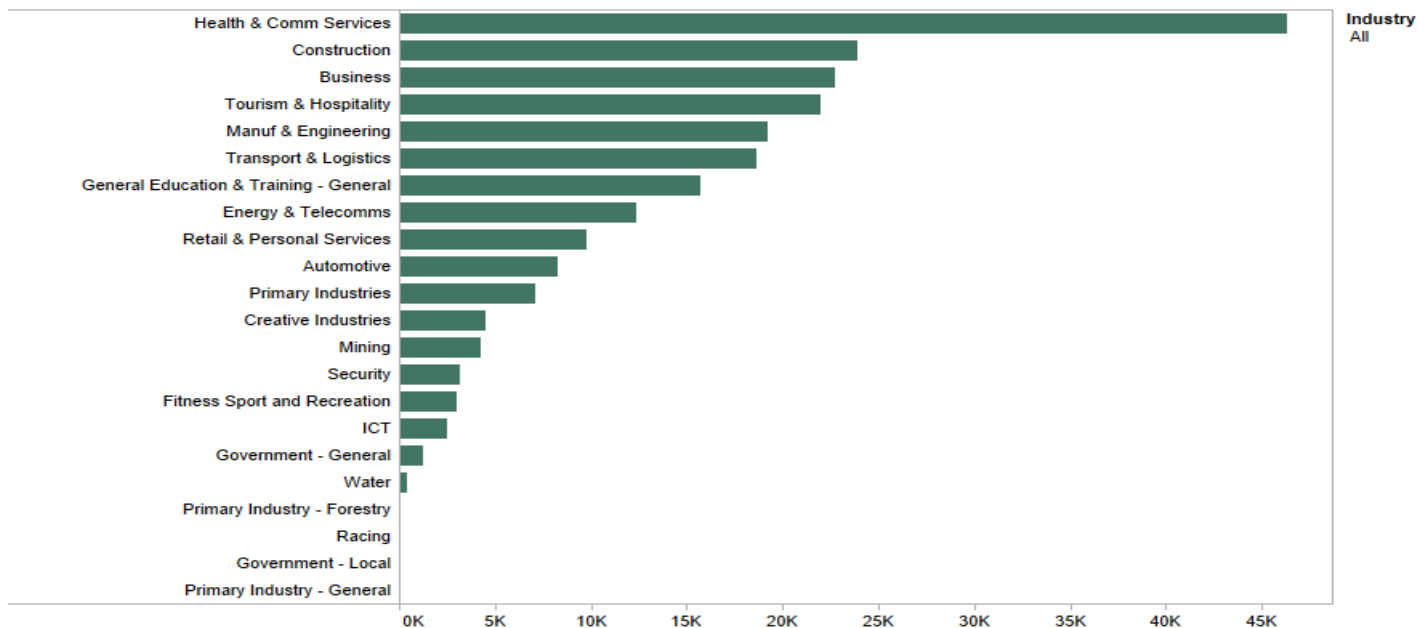
# Health and Community Services Workforce Insights

As at August 2015, Townsville, Wide Bay and Brisbane-South had the largest numbers of total employed within health and community ser..

Townsville and Wide Bay experienced the largest number of total employed workers within health and community services between August 2014 and August 2015. However, Brisbane Inner City, Darling Downs-Maranoa, Fitzroy, Logan-Beaudesert, Moreton Bay-North Sunshine Coast and Toowoomba experienced decreases during the same period.

For the March 2014-15 reference period, health and community service VET qualifications in Queensland had the highest number of student counts followed by Construction and Business.

Children Services had the highest number of student counts for the health and community services VET qualifications.



# Thank you

Jeff Pang

Analytics & Insights Manager

Email: [jpang@workforce.org.au](mailto:jpang@workforce.org.au)

Mobile: 0410607527